

# LAKE PLACID LAKE MANAGEMENT PLAN INTERIM SUMMARY

Brendan Wiltse, Ph.D.  
Water Quality Director

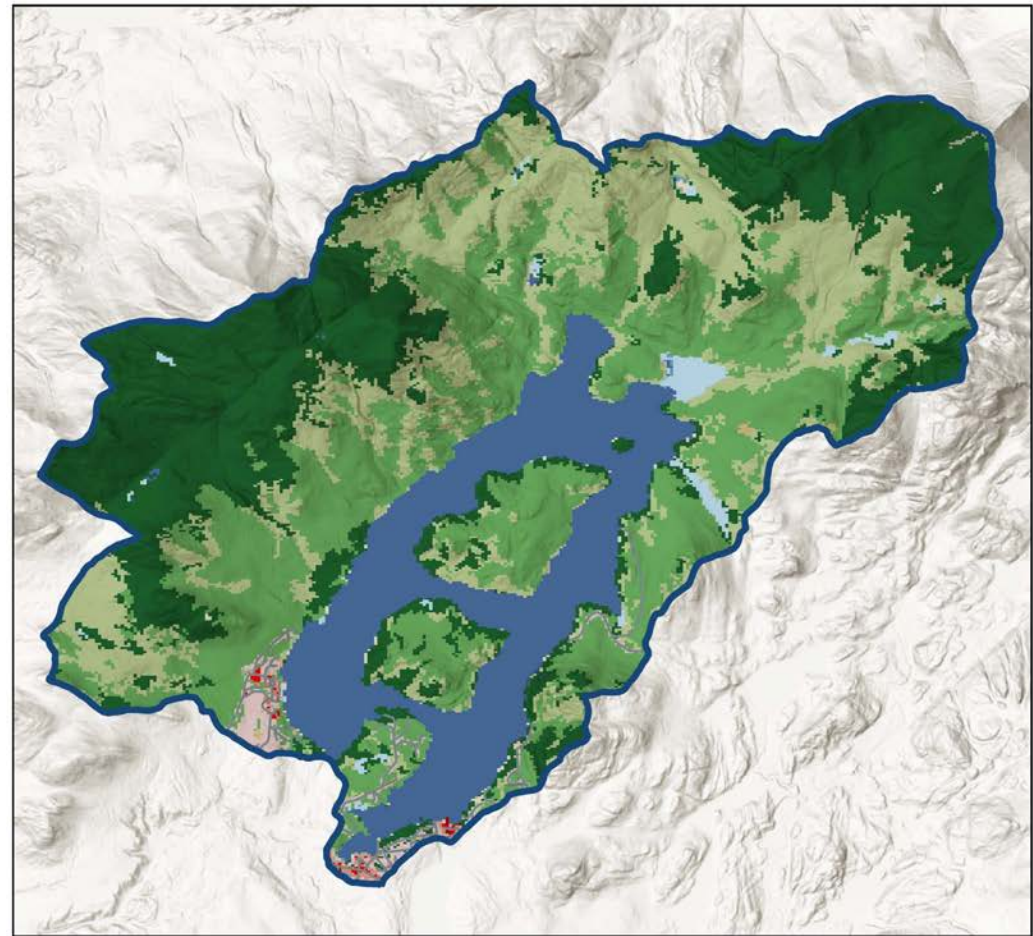


PAUL SMITH'S COLLEGE  
Adirondack Watershed Institute



# WATERSHED AND LAKE CHARACTERISTICS

- Lake Area: 806 ha
  - Max Depth: 151 feet
  - Shoreline Length: 20.3 miles
- Watershed Area: 5,166 ha
  - 81.3% Forested
  - 16.2% Open Water
  - 1% Wetland
  - 1.5% Developed



## Legend

Watershed Boundary	Barren Land
Open Water	Deciduous Forest
Developed, Open Space	Evergreen Forest
Developed, Low Intensity	Mixed Forest
Developed, Medium Intensity	Woody Wetlands
Developed, High Intensity	Emergent Herbaceous Wetlands



Data Sources: NYS DOT, USGS, NYS Office of General Services



# MAJOR GOALS OF THE MANAGEMENT PLAN

- Maintain high-water quality and establish monitoring efforts capable of early detection of changes.
- Effectively manage current infestation of variable-leaf milfoil in Paradox Bay and prevent further introduction of aquatic invasive species to Lake Placid.
- Manage recreational use of Lake Placid in a manner that preserves ecological, social, cultural, and economic values of the lake.
- Limit the impact of development on the lake through increased adoption of lake friendly practices.
- Coordinate lake management activities among stakeholders, base decisions on the best available data and most recent science.

# WATER QUALITY



# RECOMMENDATIONS

- Continue long-term monitoring through CSLAP\*.
- Maintain database of water quality monitoring data.
- Expand water quality monitoring to monthly from May to October.
- Analyze water quality data on an annual basis using modern trend analysis.
- Install a real-time water level and temperature logger near the outlet of the lake.
- Maintain ice record.
- Continue total coliform and e. coli testing. Improve record keeping, retention, and database and analyze annually for significant changes.

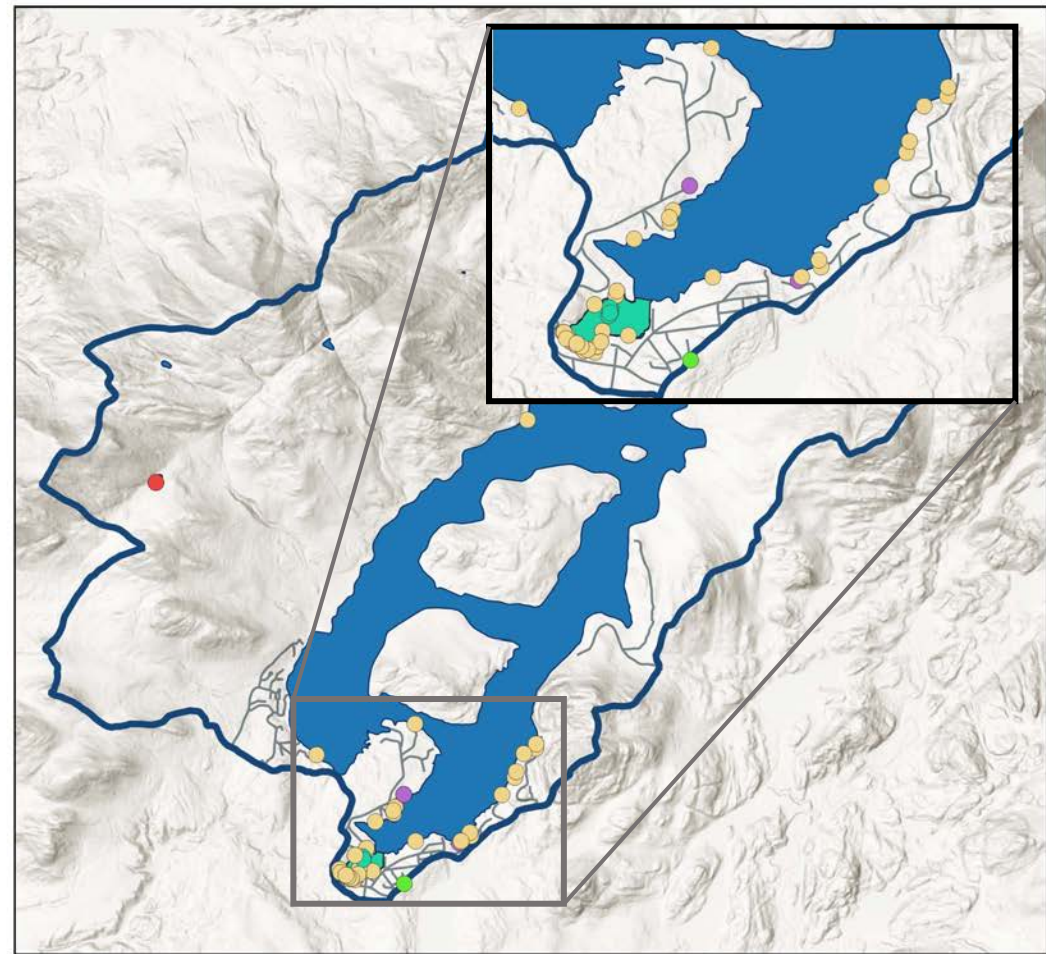
\*Citizens Statewide Lake Assessment Program (CSLAP) is a volunteer lake monitoring and education program that is managed cooperatively by DEC and NYS Federation of Lake Associations (NYSFOLA)

# INVASIVE SPECIES



# INVASIVE SPECIES

- Terrestrial
  - Garlic Mustard
  - Knotweed
  - Yellow Iris
- Aquatic
  - Variable-leaf Watermilfoil
- Interceptions
  - Eurasian Watermilfoil
  - Variable-leaf Watermilfoil
  - Water Chestnut
  - Curly-leaf Pondweed
  - Zebra Mussel
  - Quagga Mussel



## Legend

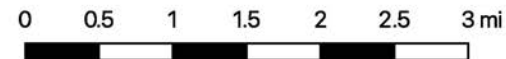
- Watershed Boundary
- Surface Water

## Invasives Species

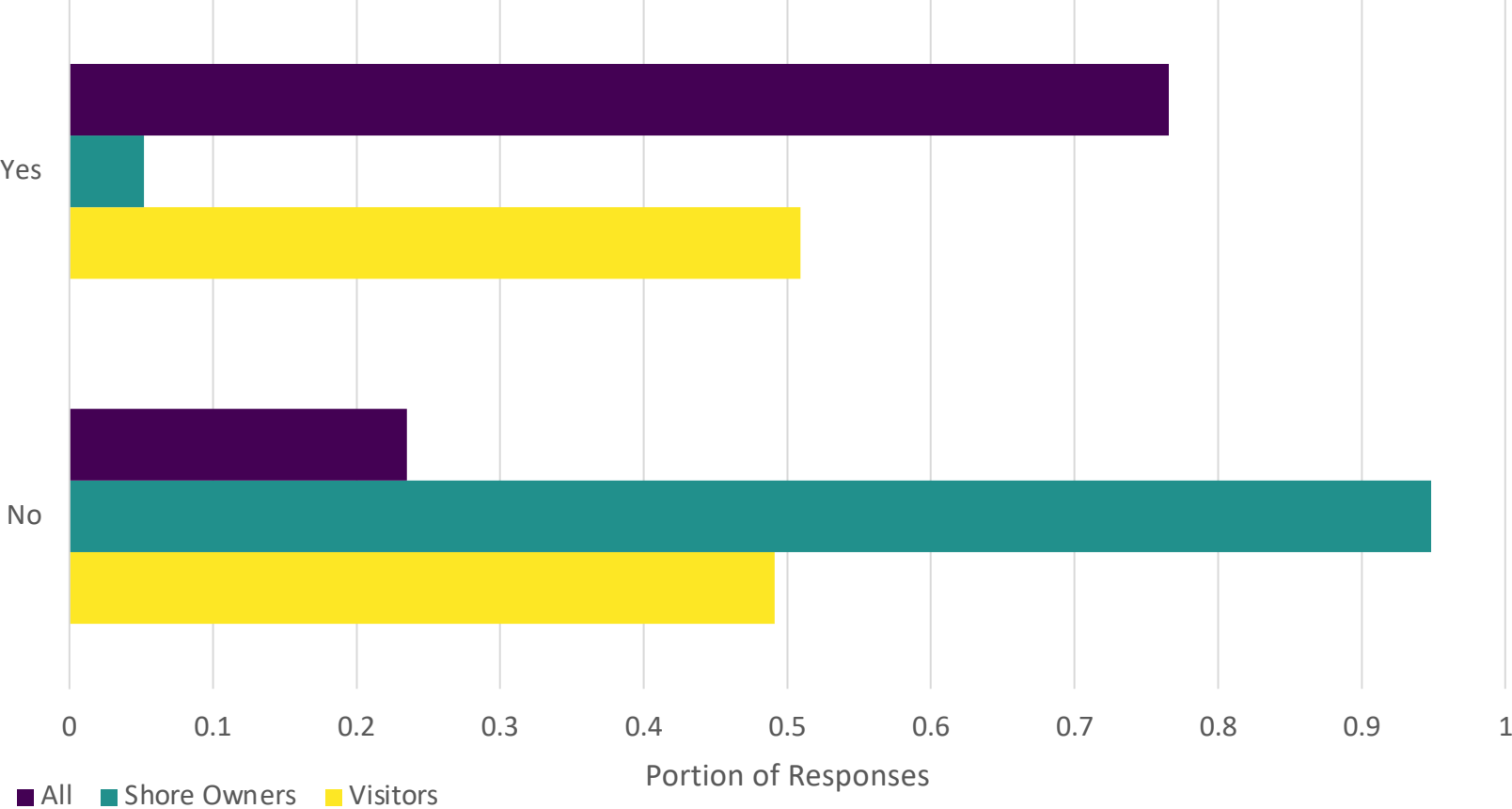
- Eurasian Water-milfoil; European Water-milfoil; Spike Water-milfoil
- Garlic Mustard
- Knotweed (species unknown)
- Variable Watermilfoil; Broadleaf Watermilfoil
- Yellow Iris, Water-flag, Yellow flag iris, Water flag, Yellow flag

Map 1. Example map caption

Data Sources: NYS DOT, USGS, NYS Office of General Services

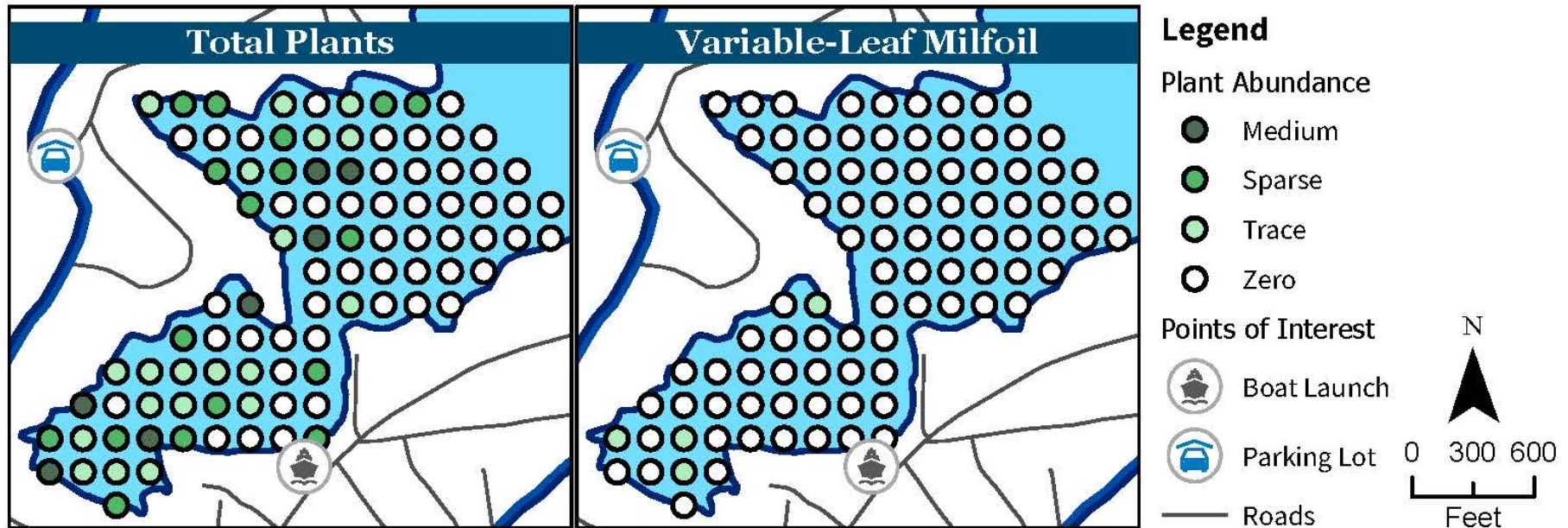


# SPREAD PREVENTION



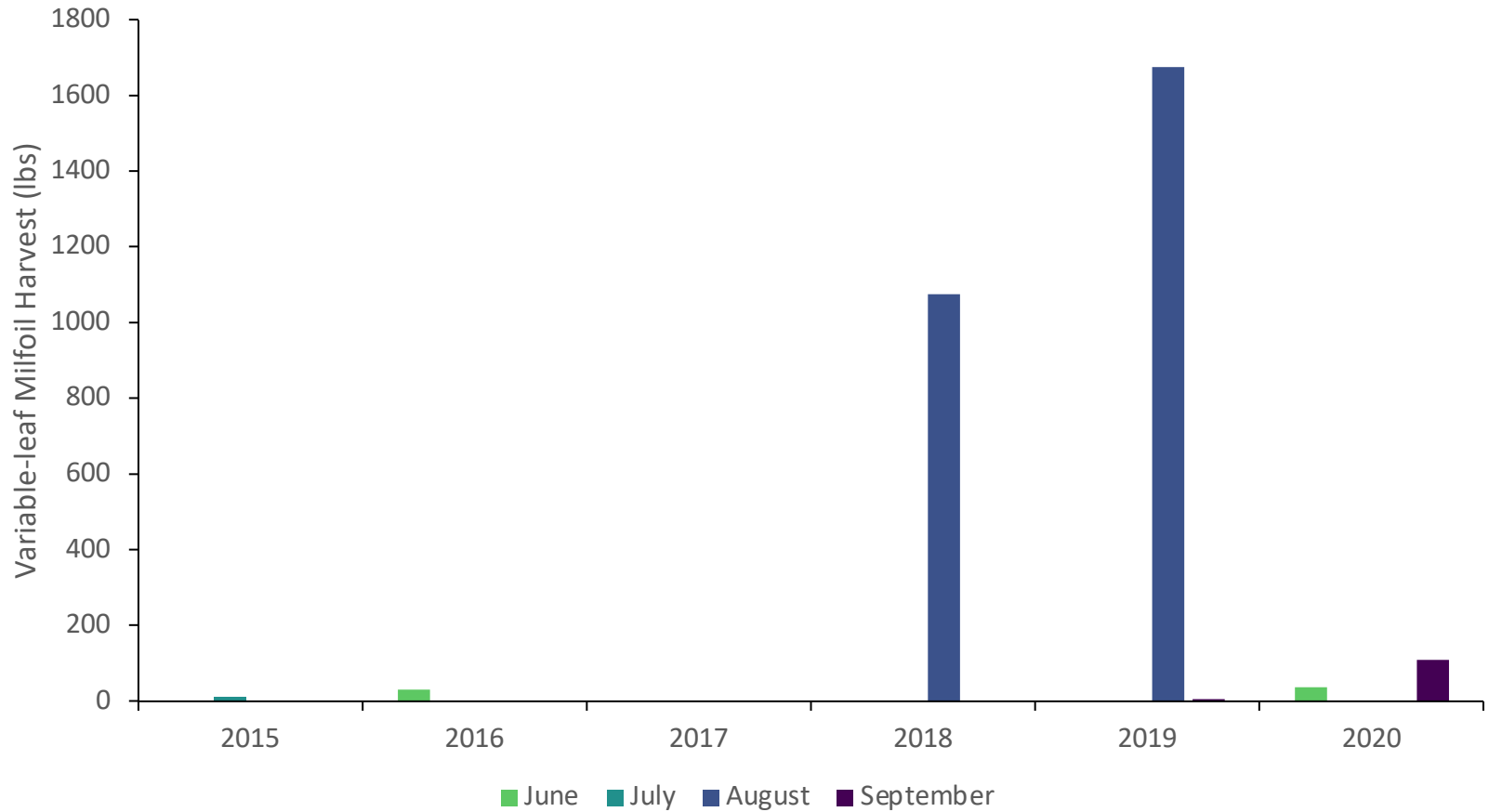


# POINT INTERCEPT SURVEY



Data Sources: United States Geological Survey, NYS Department of Environmental Conservation, Ausable River Association

# MILFOIL HARVEST DATA



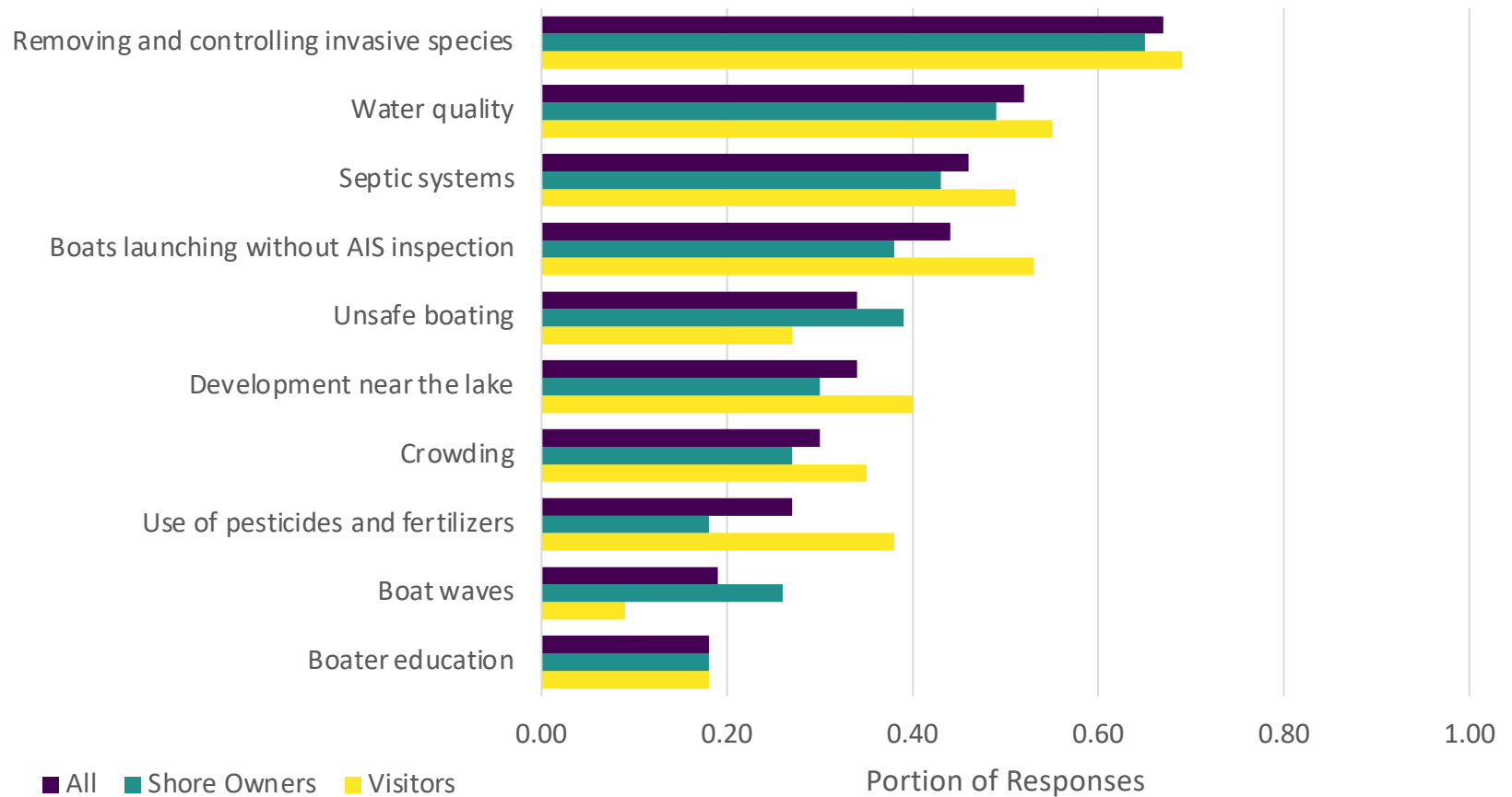
# RECOMMENDATIONS

- Continue multiple-harvest approach in Paradox Bay.
- Maintain database of harvest statistics.
- Train, organize, and keep records of volunteer aquatic invasive species surveys annually.
- Pilot mandatory inspection and decontamination at the village boat launch.
- Reconfigure boat decontamination station to allow drive-thru access in order to increase usage.

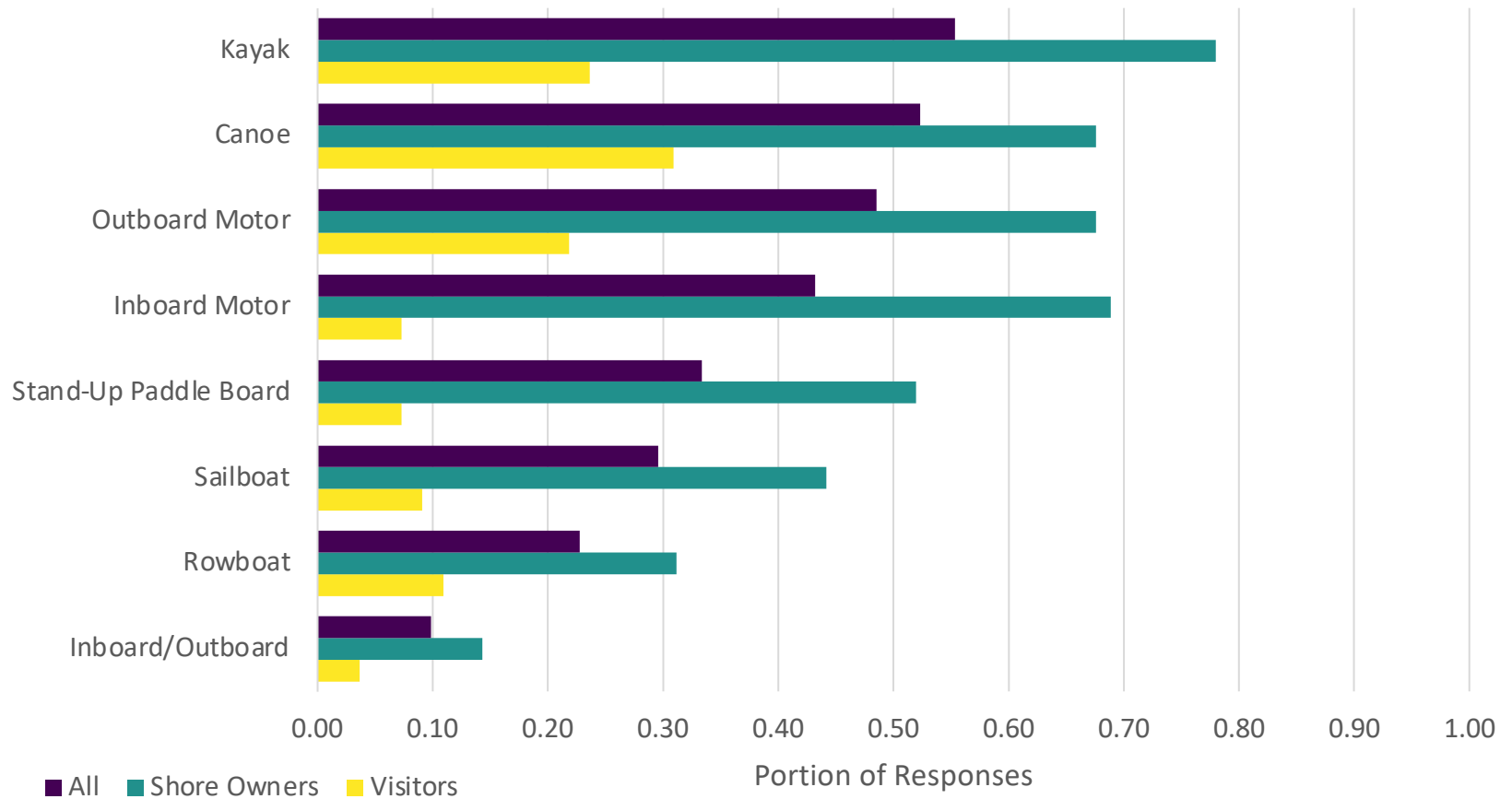
# RECREATIONAL USE



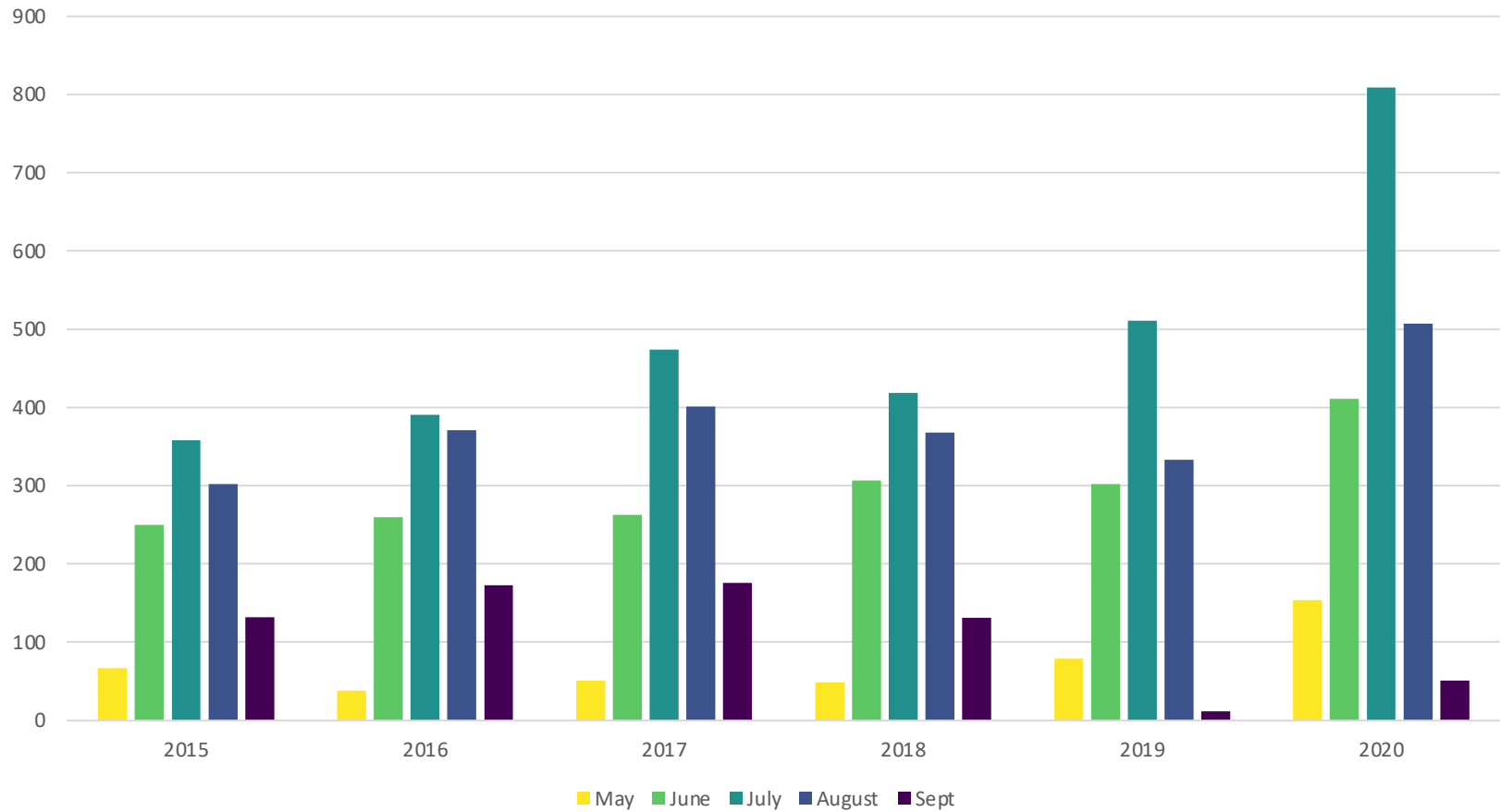
# TOP AREAS OF CONCERN



# TYPES OF BOATS USED



# LAUNCHING MOTORBOATS



# RECOMMENDATIONS

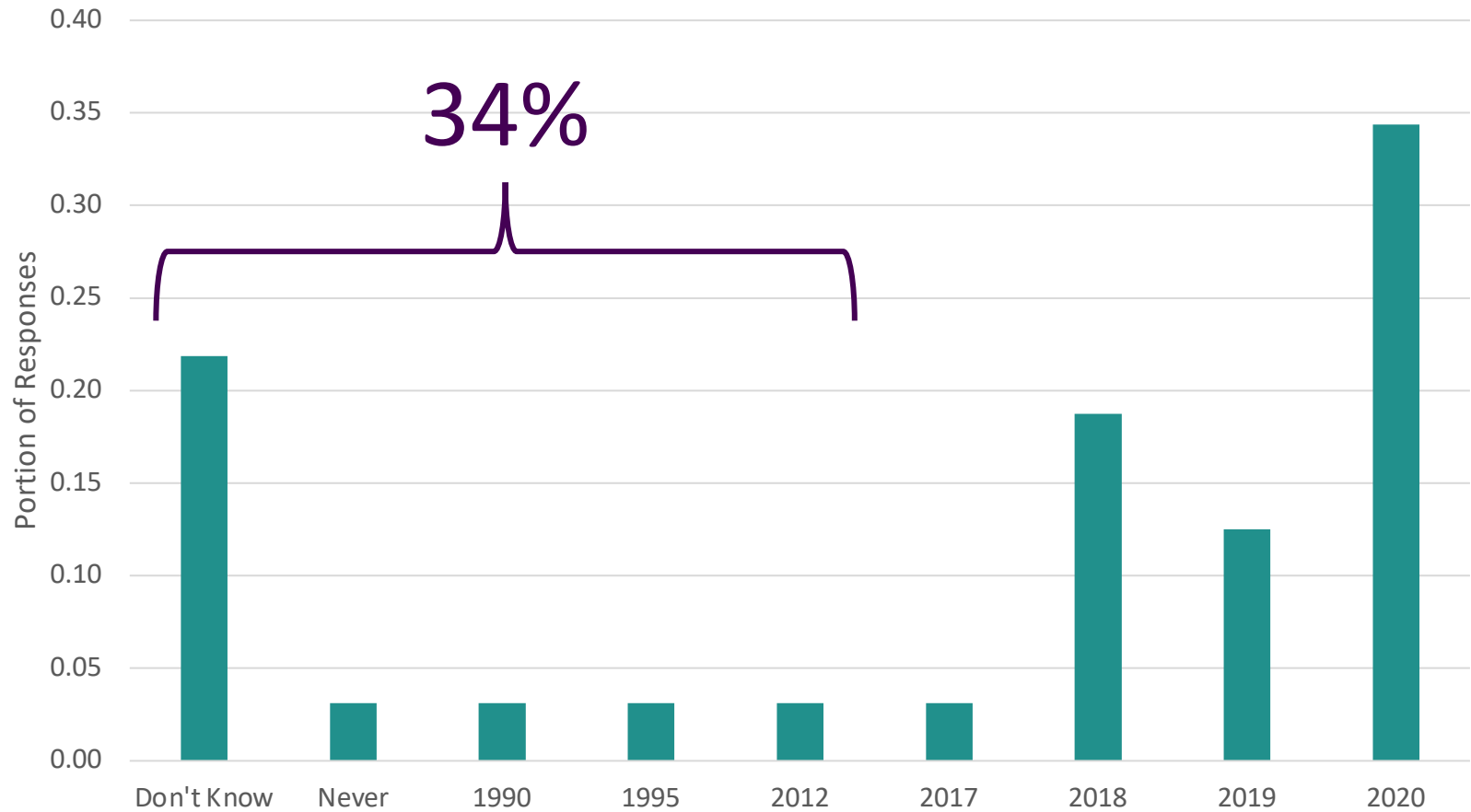
- Develop a system to regularly monitor recreational use of the lake.
- Develop a system to study wave action on the lake.
- Identify a set of indicators and thresholds for accessing carrying capacity based on a limits of acceptable change approach.
- Develop an education and outreach plan around boater safety and education.
- Work with local government and DEC to increase enforcement efforts and keep a log of enforcement activities.



# DEVELOPMENT



# DATE OF LAST SEPTIC PUMP OUT



# RECOMMENDATIONS

- Establish a committee to monitor and review changes to local laws and proposed development in the watershed.
- Encourage shore owners to plant and maintain vegetative buffers along the lake shore.
- Continue septic pump out program and coordinated efforts around septic inspections and maintenance.
- Develop database of septic system design, age, and maintenance.
- **Reach out to the New York State Department of Health to request Lake Placid be listed as a priority for state septic improvement cost share programs.**

# LAKE MANAGER

